

# CONFIRMACIÓN VERANO 25



# DENIM IN EDITORIALS

≡ HARPER'S BAZAAR – UK – FEVEREIRO 2024  
 HARPER'S BAZAAR – USA – FEVEREIRO 2024



4

**DOUBLE DENIM**  
 If spring is all about going back to basics – and the Nineties – then the overwhelming abundance of denim on the catwalks was no surprise. Trust Chanel to take the theme and increase the chic.





**BAZAAR MAN**

# TIMELESS WITH

**FAMILIAR BUT REFRESHED, THESE ARE THE LOOKS AND PIECES WITH A PERENNIAL PLACE IN OUR WARDROBES, NOW GIVEN A NEW-SEASON SPIN. BY JEFFREY YAN**

**DENIM**

Perhaps more than any other garment, jeans are the backbone of the modern wardrobe. But a slone of designers are proving that basic doesn't have to be boring. At LOEWE, Jonathan Anderson's ultra-high waists turned jeans into a high-fashion proposition. They were transformed at Gucci via a warped GG print, and at Louis Vuitton by Pharrell Williams' new Damouflage pattern. At Valentino, they were glazed to look like leather, while at Bottega Veneta, they were actually made of leather—though you wouldn't know it unless you actually touched them.

**SUITING**

The suit has been well and truly liberated from its corporate uniform connotations. This season, designers imbue it with a sense of ease and lightness that allows it to be taken from the C-suite to cocktail hour. At Prada, Miuccia Prada and Raf Simons had fluidity on their mind; their jackets were actually constructed like shirts, with structure but absolutely no stiffness. At Dries Van Noten, the suit had all the loucheness of a robe; while at Givenchy, it came with the dynamism of a tracksuit. Over at Hermès, Veronique Nichanian knocked the stuffing out of suiting with weightless versions that bordered on transparent.

**UTILITY GEAR**

These days, the appeal of workwear isn't limited to just Carhartt-core bros. The look has also been widely embraced by those who like their fashion functional. This season though, the emphasis is on the fashion. At Dior Men, Kim Jones paired cargo pockets with pleated half-skirt panels. Hed Mayner's voluminous vests had a whiff of mid-century couture. Miuccia Prada and Raf Simons' versions came in pastel hues, juxtaposed with lightweight tailoring; while Dries Van Noten showed crinkled-silk cargos in off-kilter shades of burgundy and mustard.

**SPORTSWEAR**

Athletic gear has long transcended the realms of track and field, and made its way onto the runways. Fashion, of course, has always had a way with turning the everyday into the extraordinary, and this season, designers outdid themselves. At Louis Vuitton, Pharrell Williams sent out football jerseys elevated in leathers. There were sculpted rugby shirts at JW Anderson, and silken baseball separates at Dior Men. Meanwhile, at Ferragamo and Burberry, the humble tracksuit was given a rigorous silhouette and crafted in rich materials, respectively.

52 HARPER'S BAZAAR JANUARY 2024

# A TWIST

53 HARPER'S BAZAAR JANUARY 2024



STYLE + SHOP

## Basic instinct

Denim emerged as the star of the spring/summer 2024 runways. And what better way to wear it than in its purest, most pared-back state? A relaxed jean with just the right amount of slouch and a classic white vest have never looked more relevant. Wear with strong, sharp-toed shoes to add an element of surprise

Top, £60, ZADIG & VOLTAIRE. Jumpsuit, £59.99, ZARA. Heels, £360, AHLUWALLIA

ELLE 73

## Low rider

No longer the stuff of Noughties nostalgia, low-slung denim finds its cool. Wear hip-skimming jeans with a boxy duck-egg-blue top for a new-age take on a classic pairing

Top, £160, TOTEME. Jeans (worn on page), £275, GANNI. Jeans, £270, RE/DONE. Bag, £1,300, CHANEL. Earrings, £700, BY FARAH. Necklaces, £345, UE STUDIO. Heels, £115, GUESS

ELLE 74

STYLE + SHOP

THE EDIT

## Decadent denim

A denim renaissance is afoot and the spring collections are rife with both classic and innovative styles. Glossy finishes, distressed textures, patchworked pieces and double shots – the spring/summer 2024 runways had it all. Opt for relaxed shapes such as a longline maxi skirt or wide-leg spliced trousers for denim with an edge

PHOTOGRAPHS BY LULIU MCARDIE. STYLING BY HOLLY GORST. WORDS BY ENI SUBAIR. SHOPPING BY GRACE CLARKE

FROM LEFT Elena wears jacket and skirt, both £449.99, ZARA. Ania wears jacket, £130, ARKET. Top, £15.99, ZARA. Skirt, £595, RE/DONE X LEVIE'S. Boots, £79.99, ZARA







STYLE + SHOP

1 Waistcoat, £250, FILPPA K 2 Earrings, £12,999, MANGO 3 Cardigan, £270, ACNE STUDIOS 4 Bag, \$1,250, CELINE BY HEDI SLIMANE 5 Flats, \$950, ALAÏA 6 Jacket, \$895, WALES BONNER 7 Earrings, \$450, BALENCIAGA at MYTHERESA 8 Sunglasses, £315, LOUWE at BROWNS 9 Skirt, £125, GANT 10 Trainers, £90, NIKE 11 Necklace, £366, PURA UTZ 12 Boots, £340, CLARKS 13 Boots, £90, ARKET

Jacket, £775, NIU LOTAN  
Top, £17,999, MANGO  
Skirt, £125, RAEY

ELLE 79

Jacket, £4,390, shorts, \$1,250, and boots, (just seen), \$2,150, all ALEXANDER McQUEEN

1 Heels, £490, NEOUS 2 Jeans, £115, THE FRANKIE SHOP 3 Top, £225, PROENZA SCHOUER WHITE LABEL 4 Bag, \$610, DIESEL 5 Belt, \$405, THE ROW 6 Earrings, \$785, AMINA MIYAZAKI 7 Sunglasses, £280, FERRAGAMO 8 Jacket, £150, DAMSON MADDER 9 Necklace, £265, LAURA LOMBARDI at NET-A-PORTER 10 Necklace, \$495, BONNE STUDIO 11 Jumper, \$690, VICTORIA BECKHAM 12 Skirt, £360, JW ANDERSON 13 Boots, £155, VAGABOND

ELLE 79

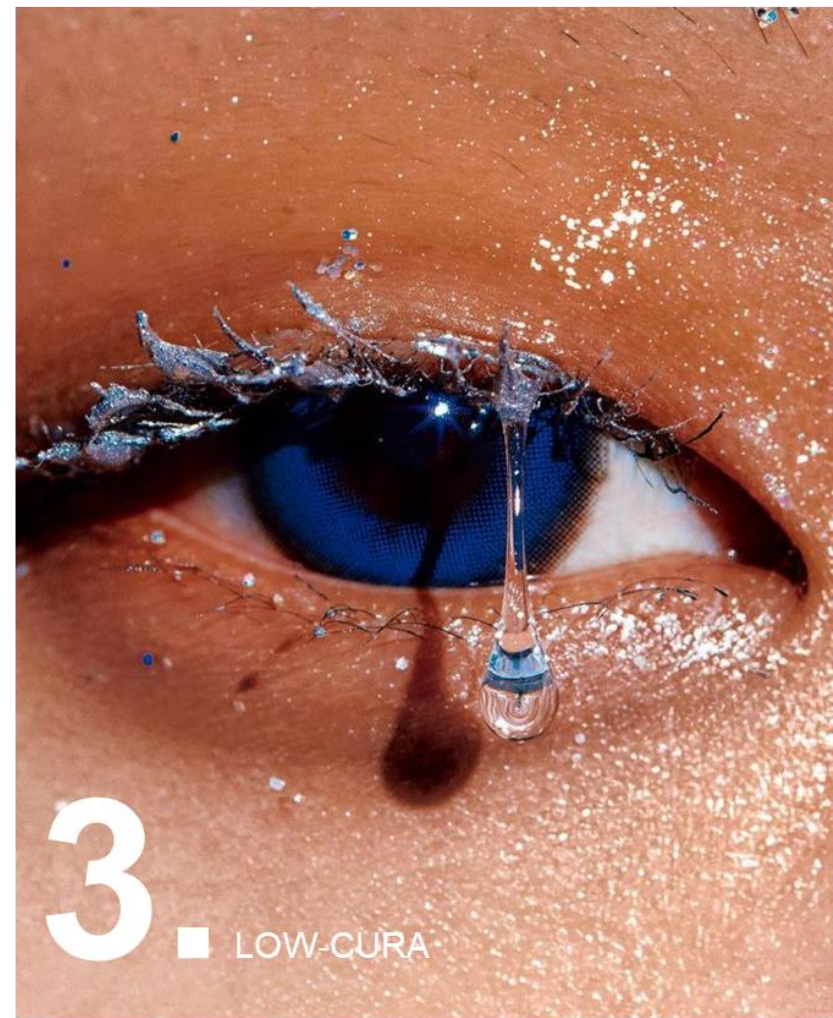
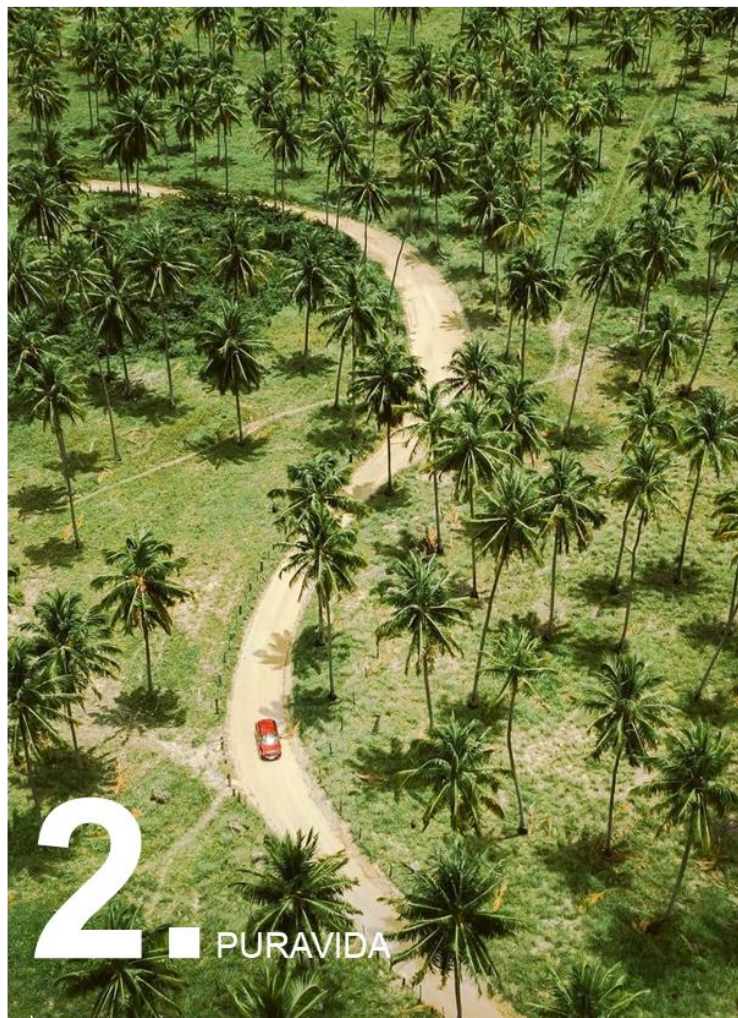
Dial-up denim  
Deeper and darker shades are quietly compelling. Skip accessories for a belted and buttoned minimalism

Hana wears shirt, £360, and jeans, £308, both THE STUDIOS. Belt, £22,999, ZARA. Aude wears jacket, £210, and trousers (just seen), \$170, both SAMSOE SAMSOE. Belt, neck, £42, INTIMISSIMI. Earrings, £200, BY FARIAH.  
HAIR: Christina Baitubax.  
MAKE-UP: Jenny Kim, using MAC Cosmetics. STYLIST'S ASSISTANT: Isabelle Churchill. MODELS: Aude Mangrum and Hana Olive, both at Precier Model Management

ELLE 79



☰ MACROTEMAS VERÃO 24/25:



# PORTALES

¡LA PUERTA DE ENTRADA A ALGO! UNA MEZCLA DE SENTIMIENTOS DONDE NOS ADENTRAREMOS EN LO DESCONOCIDO, PERO SIEMPRE LLEVANDO LO QUE TENEMOS EN EL EQUIPAJE.

AUTOCONTROL ENTRE LO TRADICIONAL Y MODELADOS DINÁMICOS, DIALOGAN PERFECTAMENTE, PROMOVRIENDO UNA AMBIGÜEDAD INCOMPARABLE.

EL ESPACIO  
VULNERABILIDAD TOQUE HUMANO  
LA FUERZA DE LA NATURALEZA PROCESOS  
VIVIR EL PRESENTE TÉCNICAS  
TECNOLOGÍA **REAPRENDER A SENTIR**  
TIEMPO EQUILIBRIO

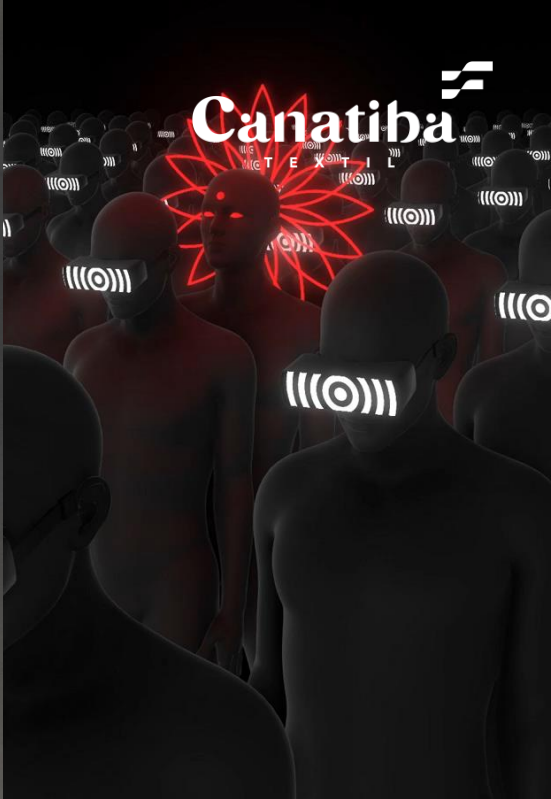




DIVINE CARE EXPERIENCE



HUIZHAN ZHANG



Canatiba



TUKA



JUSTTRIP.IT



Axiom Space

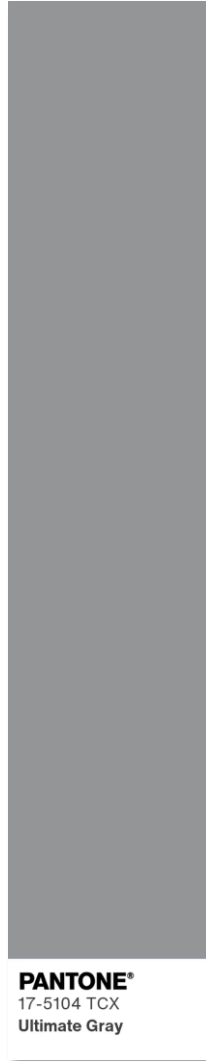
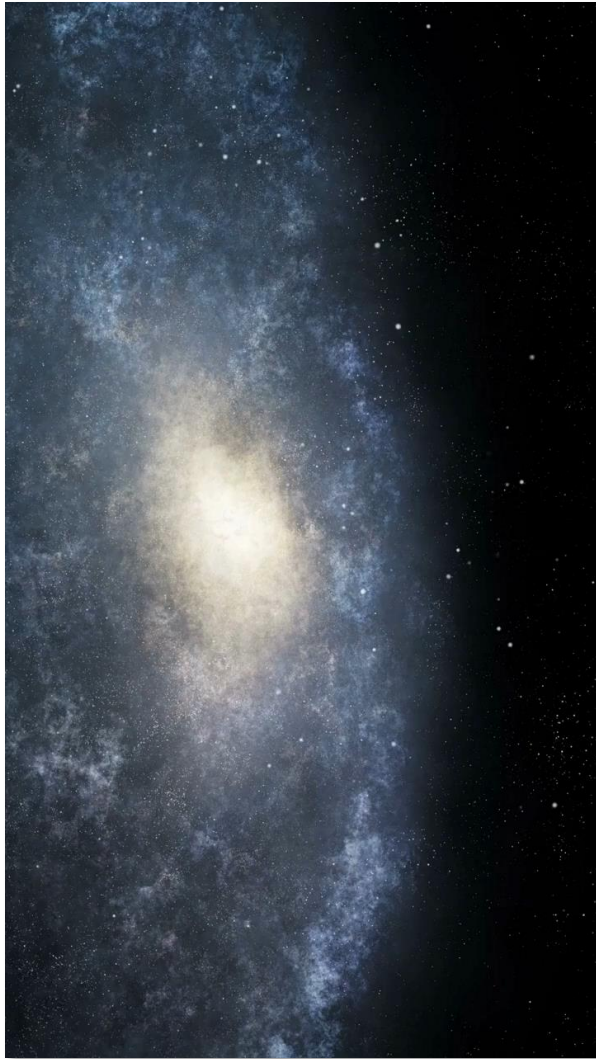
PRADA  
in space?



# COLORS



# PROFUNDO Y SEGURO



**PANTONE®**  
17-5104 TCX  
Ultimate Gray



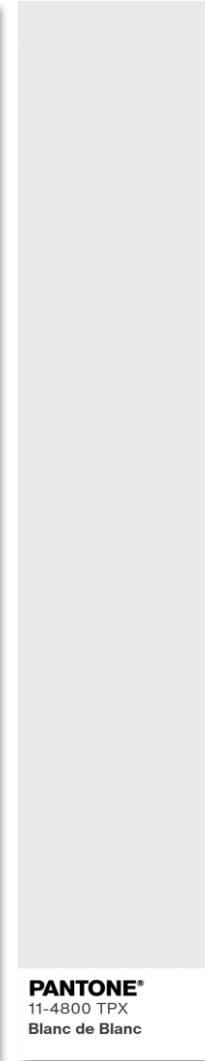
**PANTONE®**  
19-3936 TCX  
Skipper Blue



**PANTONE®**  
19-3932 TCX  
Naval Academy



**PANTONE®**  
19-4203 TPX  
Moonless Night

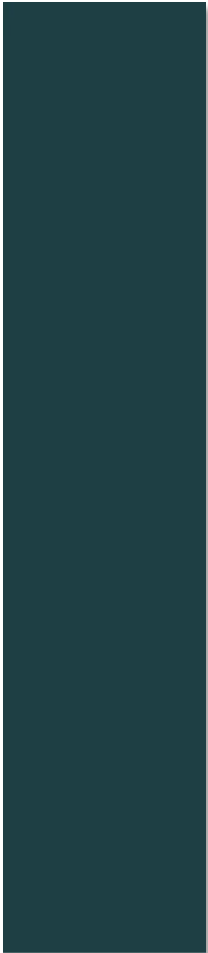


**PANTONE®**  
11-4800 TPX  
Blanc de Blanc

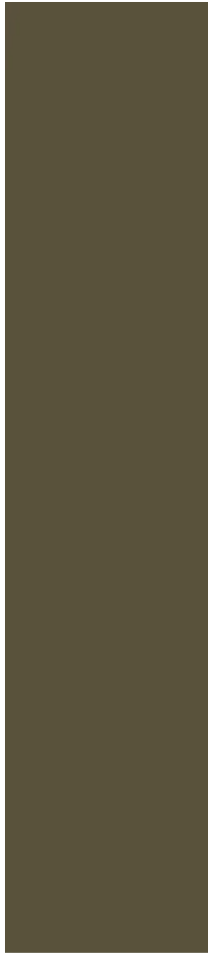




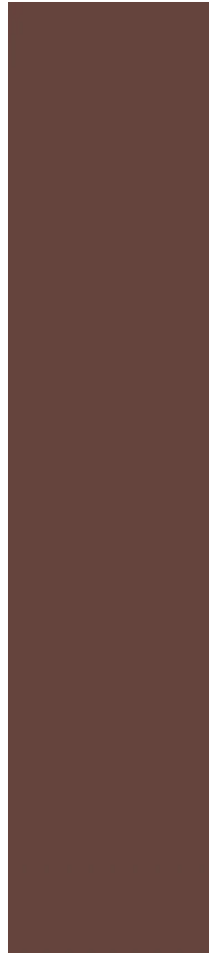
# ACOGEDORES



**PANTONE®**  
19-5025 TCX  
Dark Sea



**PANTONE®**  
19-0516 TPX  
Dark Olive



**PANTONE®**  
19-1220 TPX  
Cappuccino



**PANTONE®**  
16-1336 TPX  
Biscuit





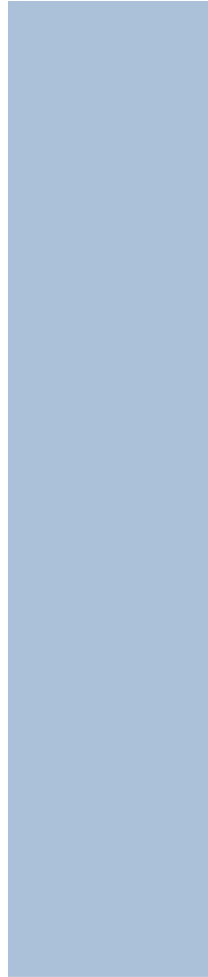
# ENERGÍA RELAJANTE



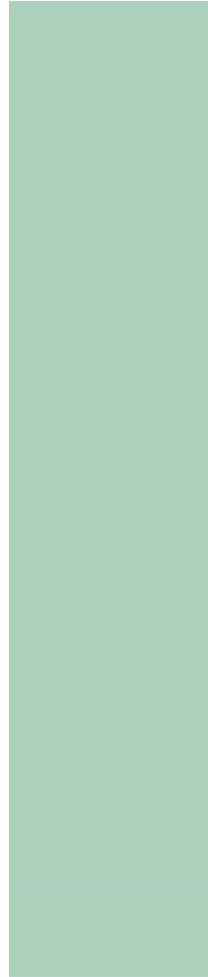
**PANTONE®**  
13-2801 TCX  
Pink-a-boo



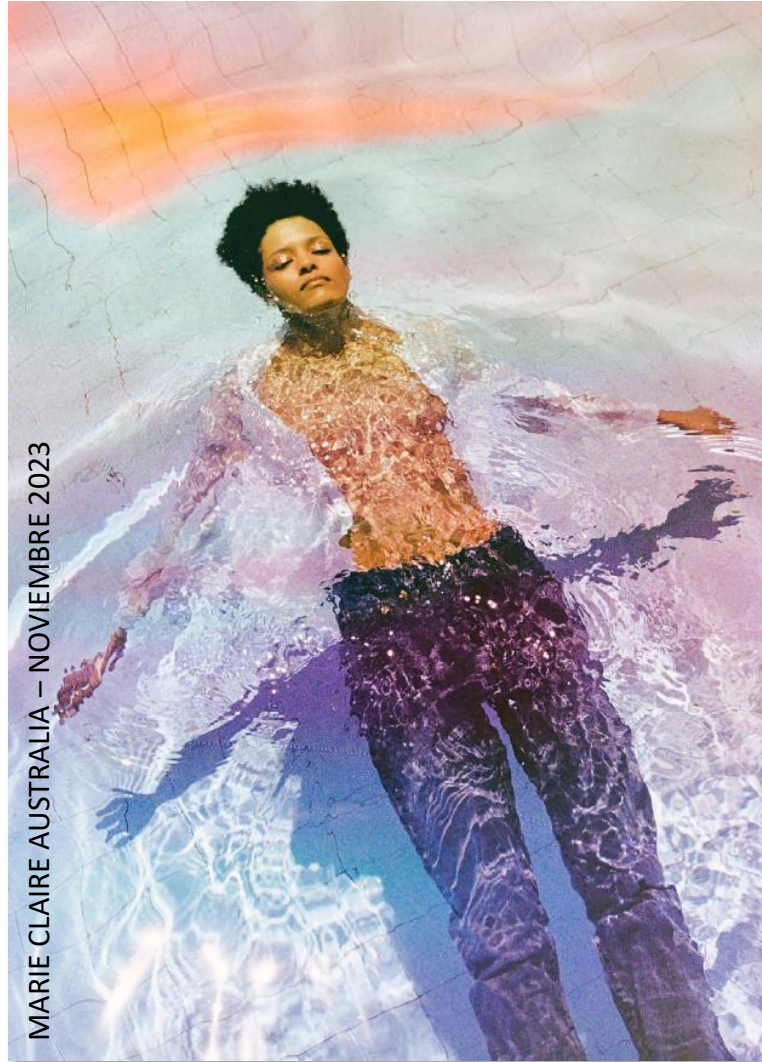
**PANTONE®**  
14-3907 TPX  
Thistle



**PANTONE®**  
14-4112 TPX  
Skyway



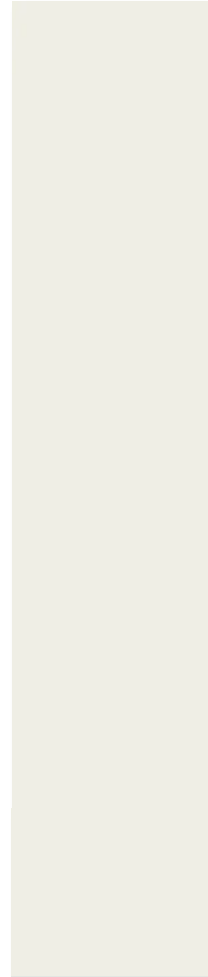
**PANTONE®**  
13-5911 TPX  
Bird's Egg Green



**PANTONE®**  
14-1108 TPX  
Wood Ash



**PANTONE®**  
14-1310 TPX  
Cameo Rose



**PANTONE®**  
11-0103 TPX  
Egret





# VIGORANTES



**PANTONE®**  
18-3223 TCX  
Cattleya Orchid



**PANTONE®**  
15-0544 TCX  
Grenoble Green



**PANTONE®**  
18-1754 TPX  
Raspberry



**PANTONE®**  
17-1140 TPX  
Marmalade



**@ESTUDIOICERTAIN**

PORTALES – MACROTEMA 2







# ESTAMPA – COLECCIÓN COORDINADO (@estudioicertain) – PORTALES







# AESTHETICS



☰ AESTHETICS: RELAX AND RELEASE/ RELALA Y LIBERA



CFCL



ANTEPRIMA



PRADA



CECILE BAHNSEN



ALEXANDER MCQUEEN



≡ AESTHETICS: NEUTRAL ASSEPSIS/ ASEPSIA NEUTRA



LOEWE



ANN DEMEULEMEESTER



HELIOT EMIL



3.1 PHILLIP LIM



ARMARIUM



≡ AESTHETICS: BLACK MAGIC/ MAGIA NEGRA



VALENTINO



3.1 PHILLIP LIM



ATXV



FERRAGAMO



WHITE MOUNTAINEERING

☰ AESTHETICS: NEO GRUNGE



THE ROW



AARON ESH



CHRISTIAN DIOR



LORO PIANA





≡ AESTHETICS: HIT REFRESH/ TOQUE ACTUALIZADO



HELMUT LANG



ADEAM



MM6 MAISON MARGIELA



ACNE STUDIOS



BISHME CROMAR



≡ AESTHETICS: UPDATING CLASSICS/ CLÁSICOS ACTUALIZADOS





≡ AESTHETICS: POWER FETICHE/ FETICHE DE PODER



SCHIAPARELLI

EDUM CHOI



DRIES VAN NOTEN



VALENTINO



CHRISTIAN DIOR





☰ AESTHETICS: STAR GAZER/ MIRANDO LAS ESTRELLAS



THE ATTICO

MUGLER



THE ATTICO

QASIMI



GUCCI



≡ AESTHETICS: BEAUTY OF CHAOS/ BELLEZA DEL CAOS





≡ AESTHETICS: FLORAL FANCY/ FANTASÍA FLORAL



ALEXANDER MCQUEEN



DIDU



LELA ROSE



VALENTINO



SCHIAPARELLI



☰ MAKE THE DIFFERENCE – HACIENDO LA DIFERENCIA





≡ AESTHETICS: HUMAN TOUCH/ TOQUE HUMANO







# SHAPES







PARIS GEORGIA – PRE FALL 25



ANDRES OTALORA



AYA MUSE – PRE FALL 25





☰ COLOR SHIRT



BOTTEGA VENETA



TAKEMARU



3.1 PHILLIP LIM



BALMAIN



VALENTINO



ANDRES Q'ALOR





# DENIM SHIRT



VALENTINO



BOTTEGA VENETA



MAGDA BUTRYM – PRE FALL 25





ADELBEL



BARBOUR



TELA





MOTHER DENIM



AZ FACTORY



AKRIS PUNTO

☰ CROPPED RIDER JACKET



NILI LOTAN



GIVENCHY



BY.DYLN





☰ BODY LINE JACKET



PARIS GEORGIA – PRE FALL 25



ALEXANDER MCQUEEN



CHRISTOPHER ESBER – PRE FALL 25



STELLA MCCARTNEY



FERRAGAMO



VOGUE UK – FEVEREIRO 2024





ADELBEL



A.W.A.K.E. MODE



CHRISTOPHER ESBER – PRE FALL 25





ALEXANDER MCQUEEN



PRADA

☰ DENIM BLAZER



LOPO PIANA



MAGDA BUTRYM



TELA







GIVENCHY



PARIS GEORGIA – PRE FALL25



ALEXANDER MCQUEEN





# ASSIMETRIC SKIRT





# MAXI SKIRT



DES PHEMMES



DRIES VAN NOTEN



LAPONIT – PRE FALL25







LUDOVIC DE SAINT SERNIN



JEANERICA



VOGUE – UK JANEIRO 2024

Take note, Prada's studious eyewear is bound to score you bonus fashion points.  
Mary, Aylah and Celine all wear: wool jacket, wool shorts, leather shoes, leather belt, bag, and glasses. PRADA. Eyewear: all items. See Vogue.com for more.



SEA



AYA MUSE – PRE FALL25



NILI LOTAN





HELMUT LANG



TOM FORD



STELLA MCCARTNEY



ROBES & CONFECTIONS



TOM FORD



ALEXANDER MCQUEEN





PARIS GEORGIA — PRE FALL 25



CHRISTOPHER ESBER — PRE FALL 25



ELLE — FRANÇA — JANEIRO 2024 - GUCCI



BOTTEGA VENETA



GIVENCHY



MAISON MARGIELA





PLAN C



VALENTINO



ROTATE

STELLA MCCARTNEY



TELA



FERRAGAMO







LAPPOINT - PRE FALL 25



BY.DYLN



DARKPARK



# CARGO COLOR



BRIONI



ISABEL MARANT



RICK OWENS





# DENIM CARGO



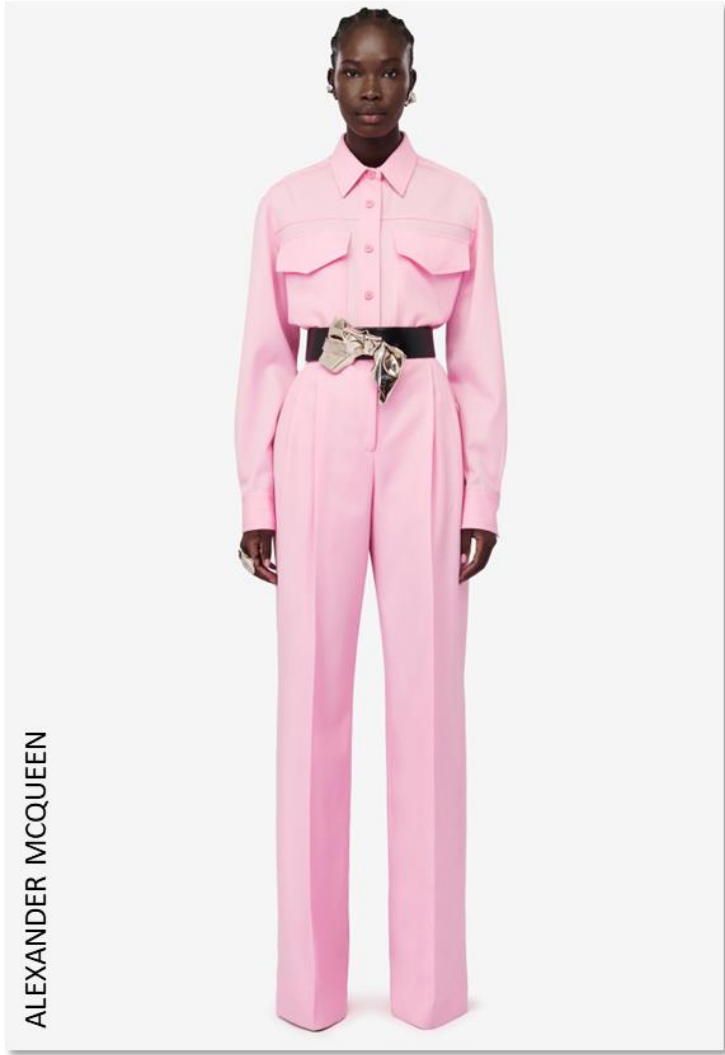
ZERO+ MARIA CORNEJO



GIVENCHY



IHNN



ALEXANDER MCQUEEN



ROBES & CONFECTIONS



3.1 PHILLIP LIM





DENIM WIDE



ALEXANDER MCQUEEN



3.1 PHILLIP LIM



GIVENCHY



DRIES VAN NOTEN



ANDRES OTALORA



3.1 PHILLIP LIM











DRIES VAN NOTEN



ALEXANDER MCQUEEN



TELA







DENIM ALL IN ONE





# CAMPAIGNS



















☰ 3.1 PHILLIP LIM: ID



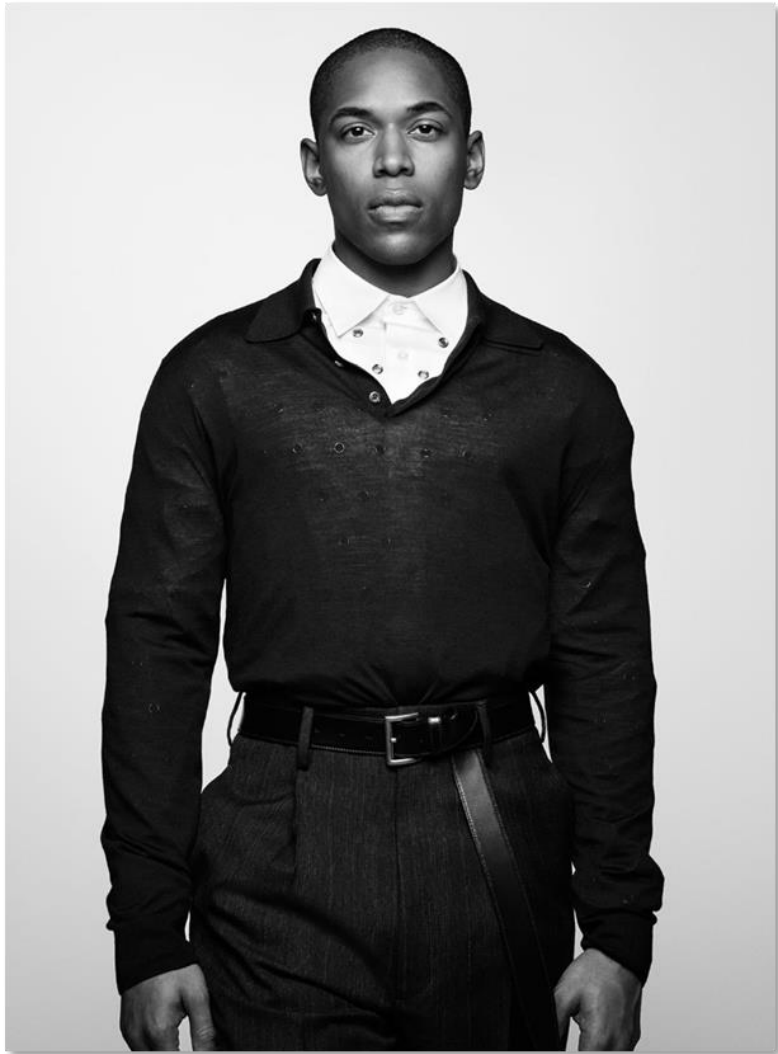




**BALENCIAGA**

**BALENCIAGA**

**BALENCIAGA**











BOTTEGA VENETA



BOTTEGA VENETA



BOTTEGA VENETA





# EDITORIALS















# BEST FABRICS



# BEAUTYdenim®

CANATIBA'S FABRIC TREATMENT

## ALEPO STÉTICA: 500/4409

Peso: 9,5Oz

Composición: 97 % Algodón; 3 % Elastano

Ancho: 1,42m

Stretch: 65%

Categoría: Azul Original

### Beauty Denim: Tecnología que aporta beneficios de tratamiento en el cuidado del cuerpo.

- Acabado con una mezcla de aceites esenciales y activos naturales como árnica, té verde, café y romero, que favorecen el bienestar y la hidratación de la piel;
- Estos activos naturales, en contacto con la piel, actúan sobre la microcirculación y mejoran el flujo sanguíneo, ayudando a reducir las medidas, hidratando, además de tener acción antiinflamatoria y combatir a los radicales libres;
- \*Confort combinado con un tacto suave y perfumado;
- Alto stretch y mantenimiento de la forma.





**JENNY DUO CORE IND BLUE: 500/4576**

Peso: 9,5Oz

Composición: 97 % Algodón;  
27 % Modal; 21 % Tencel; 6 % Elastomultiéster; 3 % Elastano

Ancho: 1,45m

Stretch: 65%

Categoría: Azul medio

Reverso: Modal índigo



**INÉDITO DUO CORE: 500/4599**

Peso: 8,5Oz

Composición: 92% Algodón;  
5% Elastomultiéster; 3% Elastano

Ancho: 1,44m

Stretch: 45%

Categoría: Azul Original

Índigo Brillante





**NORONHA DUO CORE: 500/4594**

Peso:9,5Oz

Composición: 94 % Algodón; 4 % Elastomultiéster; 2 % Elastano

Ancho: 1,45m

Stretch: 40%

Categoría:Azul Original

Tacto suave y efecto de hilo especial.



**ADELE DUO CORE DARK: 500/4606**

Peso: 8,50z

Composición: 94% Algodón;  
5% Elastomultiéster; 3% Elastano

Ancho: 1,40m

Stretch: 60%

Categoría: Azul Intenso

Nuevo color





**MAJESTIC MAXSKIN DUO: 500/4607**

Peso: 9,00z

Composición: 76%Algodón;22%Poliéster;2%Elastano

**Ancho: 1,64m**

Stretch: 35%

Categoría: Azul Original

Reverso trama mezcla, super satín, toque especial



**NORONHA MAXSKIN DUO: 500/4593**

Peso:9,5Oz

Composición: 68 % Algodón; 20 % Poliéster; 10 % Viscosa; 2 % Elastano

Ancho: 1,42m

Stretch: 35%

Categoría:Azul Original

Reverso trama negra, super plano, toque especial





**TIAMO PT: 500/4587**

Peso: 7,50z

Composición: 57 % Tencel; 33 % Algodón; 7 %  
Elastomultiéster; 3 % Elastano

Ancho: 1,50m

Stretch: 40%

Categoría: PT

Nuevo Tencel Duo Core



**NEW RAYO PT DUO CORE: 500/4588**

Peso: 7,50z

Composición: 92 % Algodón; 5 % Elastomultiéster; 3 % Elastano

Ancho: 1,36m

Stretch: 40%

Categoría: PT

Mejoría del toque





**KAZUCO MAXSKIN VINTAGE: 500/4589**

Peso:10,5Oz

Composición: 63 % Algodón; 35 % Tencel; 2 % Elastano

Ancho: 1,63m

Stretch: 25%

Categoría:Azul Medio Ecológico

Comodidad y aspecto vintage





**ALGOCEL PT MAXSKIN: 500/4580**

Peso: 9,00z

Composición: 54 % Algodón; 44 % Tencel; 2 % Elastano

Ancho: 1,56m

Stretch: 40%

Categoría: PT

Comodidad, tacto y fluidez







**ALGOCEL PT RÍGIDO: 600/2499**

Peso:9,00z

Composición: 50 % Algodón; 50 % Tencel

Ancho: 1,71m

Categoría: PT

Comodidad, tacto y fluidez





**ALGOCEL PETEFLEX: 500/4581**

Peso: 8,00z

Composición: 64 % Algodón; 34 % Tencel; 2 % Elastano

Ancho: 1,68m

Stretch: 45%

Categoría: PT

Nuevo Satín en mezcla Tencel y Algodón, confort y tacto suave.





**KIOTO MAXSKIN: 500/4591**

Peso: 9,5Oz

Composición: 76 % Algodón; 22 % Tencel; 2 % Elastano

Ancho: 1,64m

Stretch: 40%

Categoría: Azul Original Ecológico

Comodidad, tacto y brillo natural.



**É-BRASA IND: 500/4585**

Peso:10,00z

Composición: 97 % Algodón; 3 % Elastano

Ancho: 1,40m

Stretch: 60%

Categoría:Azul Original

Tacto súper suave





**MADMAX PT: 500/4600**

Peso: 7,00z

Composición: 97 % Algodón; 3 % Elastano

Ancho: 1,71m

Stretch: 25%

Categoría: Diferenciado



**HENDRIX PT: 500/4601**

Peso: 7,50z

Composición: 98 % Algodão; 2 % Elastano

Ancho: 1,75m

Stretch: 15 %

Categoría: Diferenciado





**KOMODO PT: 500/4603**

Peso: 8,00z

Composición: 98 % Algodão; 2 % Elastano

Ancho: 1,60m

Stretch: 35%

Categoría: PT



**ENJOY UPCYCLING PT: 500/4605**

**ENJOY UPCYCLING COLLOR: 500/4609**

Peso: 7,5Oz

Composición: 64%Algodón;33%Poliéster;3%Elastano  
33%PES Reciclado

Ancho: 1,40m

Stretch: 50%

Categoría: PT y Color (6 colores)

Producto Circular: Materia prima de PET, multifilamento súper suave y acabado circular base aceite de cocina.





**OKAMOTO O.D.BLACK: 500/4595**

Peso:9,5Oz

Composición: 97 % Algodón; 3 % Elastano

Ancho: 1,50m

Stretch: 45%

Categoría: Over Dyed

Efecto de hilo origen de los tejidos japoneses



**MADALEINE FINISH COLLOR: 600/2501**

Peso: 7,5 Oz

Composición: 100 % Algodón

Ancho: 1,72 m

Categoría:Color (6 colores)

Sin necesidad de lavado, acabado noble, lisura y brillo natural.